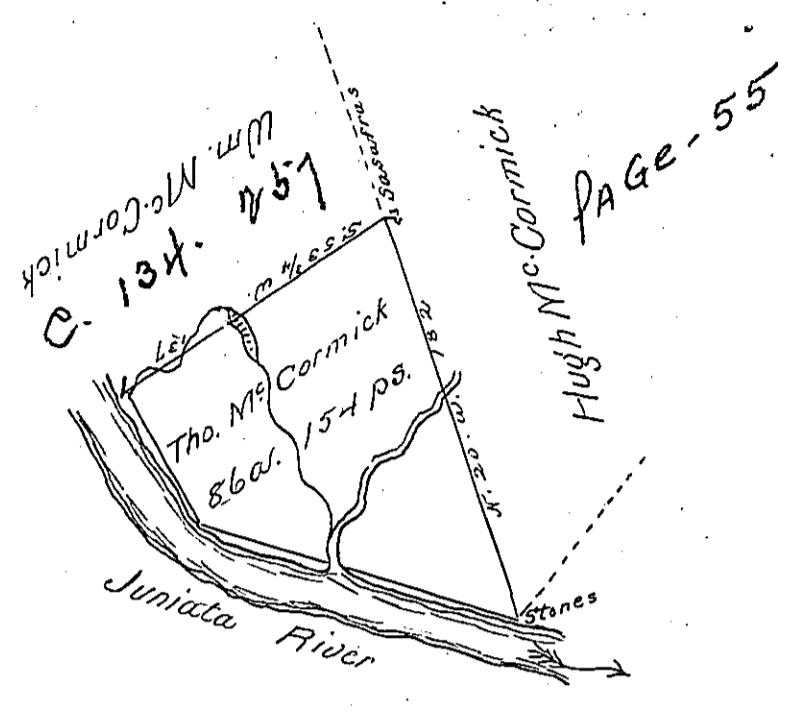


Courses & Dist<sup>ce</sup>  
 down Juniata  
 S. 35. E. 63  
 S. 74. E. 141 1/2  
 204 1/2



A draught of a tract of land situate in Fern-  
 anagh township Mifflin County containing eighty six  
 acres one hundred and fifty four perches & the usual  
 allowance of six p<sup>er</sup>ches for roads &c. surveyed for Thomas  
 McCormick April 4<sup>th</sup>. 1759 by virtue of a Warrant dated  
 March 7<sup>th</sup>. 1755

James Harris D. S.

To Daniel Brodhead Esqr. }  
 Survr. Genl. of Pennsylvania }

IN TESTIMONY that the above is a copy of the original remaining on file in  
 the Department of Internal Affairs of Pennsylvania, made  
 conformably to an Act of Assembly approved the 16th day of  
 February, 1833, I have hereunto set my Hand and caused  
 the Seal of said Department to be affixed at Harrisburg,  
 this sixth day of November 1900

*James W. Latta*  
 Secretary of Internal Affairs.